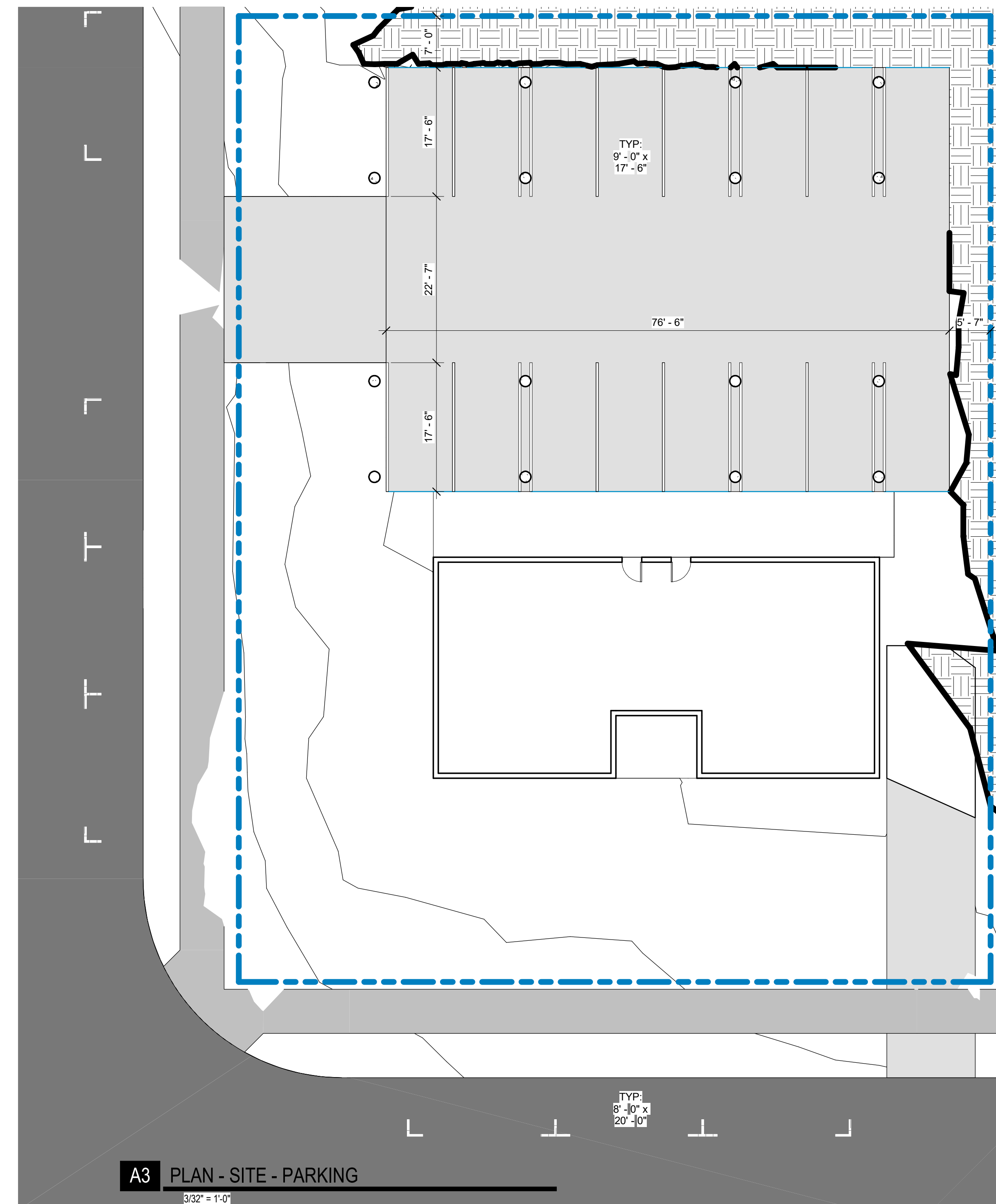
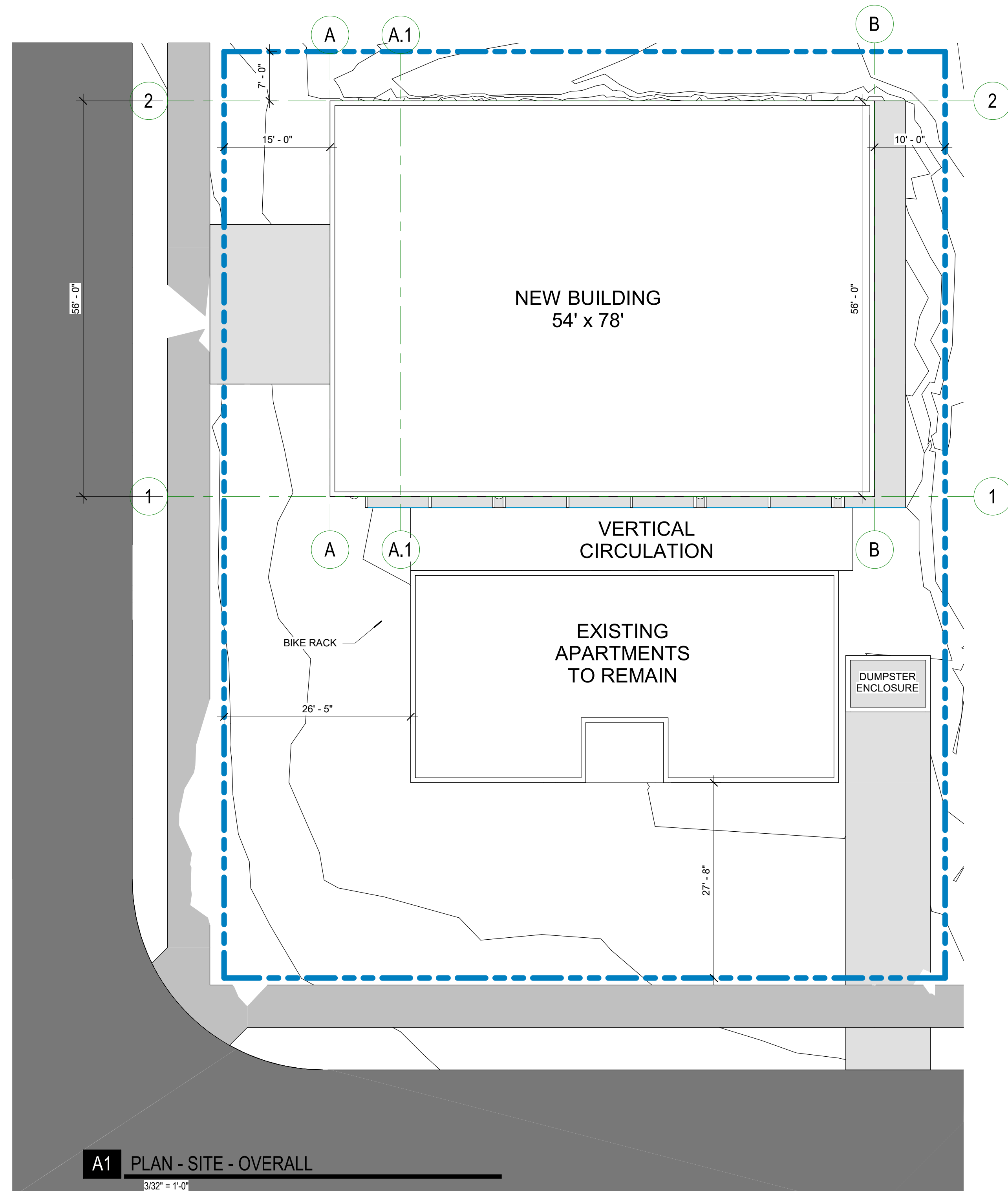
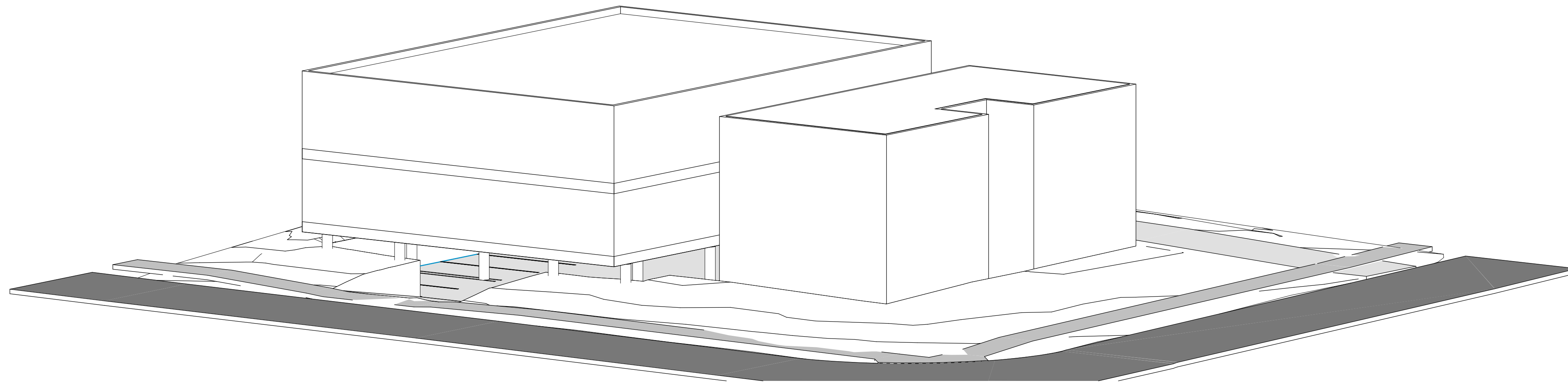


**PARKING CALCULATIONS**

**PARKING REQUIREMENT:** 21A.44.030

- REQUIRED: 20
  - CN DISTRICT, 1 SPACE PER DWELLING UNIT: 6
  - 3 SPACES/1000SF ON LEVEL 01: 12
  - 1.25 SPACES/1000SF ON LEVEL 02: 5
  - SHARED PARKING BETWEEN OFFICE AND RESIDENTIAL, HIGHEST DEMAND BETWEEN 7AM-6PM WITH 100% OFFICE AND 50% RESIDENTIAL
- ACTUAL: 21
  - 15 SPOTS IN PARKING LOT (1 ADA)
  - 6 SPOTS ON STREET



**HOFMAN ORTHOPEDIC**

1583 STRATFORD AVE  
SLC, UT 84106  
Rezoning Application

JOB NUMBER: 21230  
OWNER: Owner  
DATE: Issue Date

REV	DATE	DESCRIPTION

OVERALL PLAN - SITE

**AS101**

11/18/2021 1:10:42 PM